

FEATURED ALUM-A-LIFT INTRINSICALLY SAFE CLAMP LIFT FOR HANDLING PIPES

PROJECT 34217

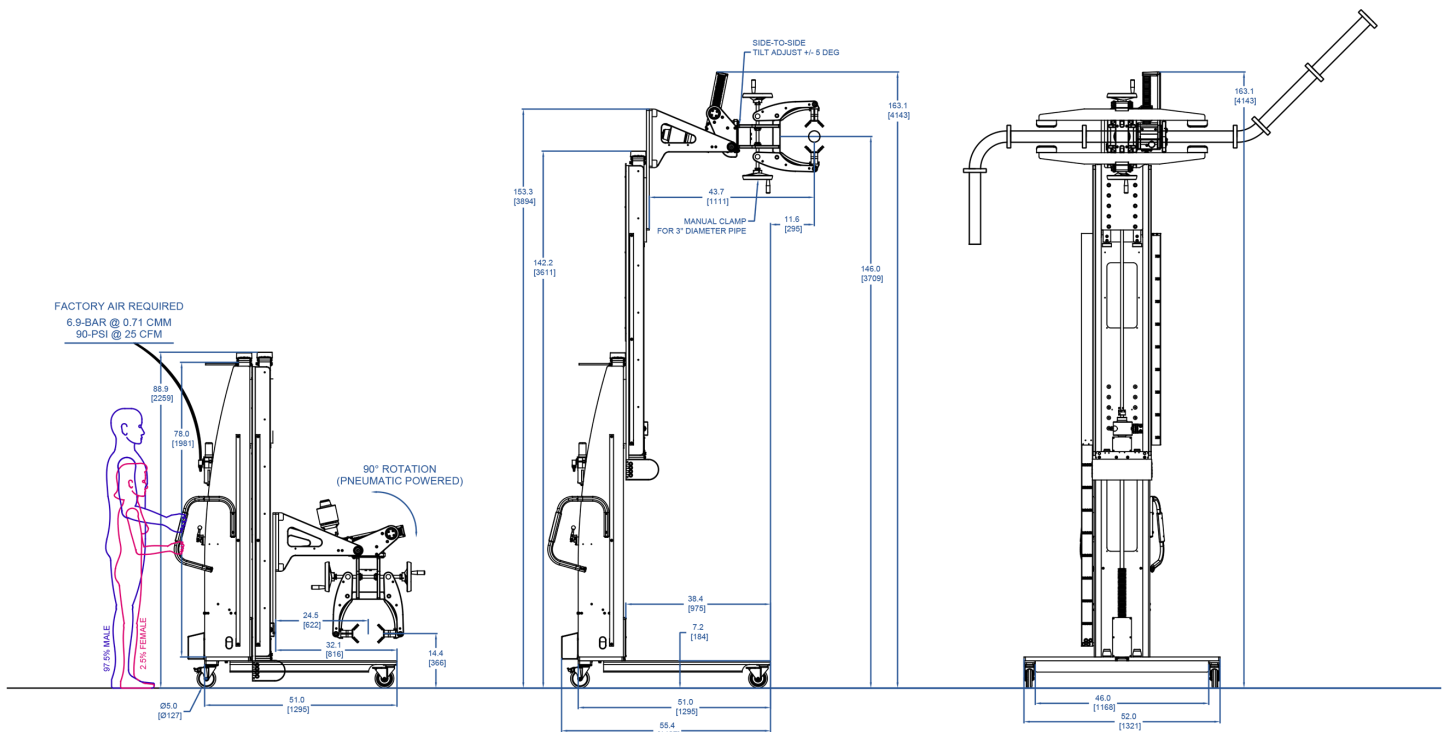


MODEL A800CLRISR-78/78

FEATURING Intrinsically Safe (Class 1, Div 1), Telescoping Mast, Pneumatic Front-to-Back Tilt, Manual Clamp

HANDLING 225 lb [102 kg] Pipe Assemblies

DETAILS A multinational industrial company needed a lifting solution that can operate within a Class 1, Div 1 environment and assist personnel with disconnecting and moving sections of piping to a cart for cleaning before reassembling. In order to be intrinsically safe, Alum-a-Lift made the telescoping mast and forward tilting function pneumatically powered for use in their hazardous area. A manual clamp is used to grip the pipe assembly before tilting. Once in position, the clamp force can be reduced to allow the pipe assembly to rotate along its center axis. Additionally, this intrinsically safe clamp lift has a side-to-side tilt adjustment module to allow fine positioning of the pipes, ensuring proper alignment when reinstalling the pipe sections.



alum-a-lift

13941 Veterans Memorial Hwy
Winston, GA 30187 USA
+1 770 489 0328

GET STARTED AT ALUM-A-LIFT.COM