

FEATURED ALUM-A-LIFT
SANITARY WASH DOWN LIFT FOR HANDLING TOTES

PROJECT
27002

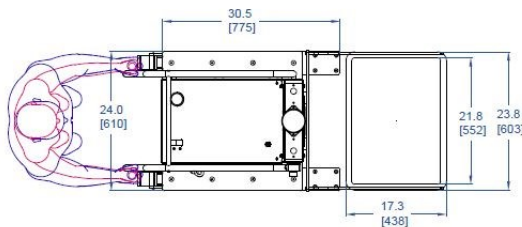


MODEL C800SSWD-72

FEATURING Fixed width fork set with retaining fingers, counter balance, sanitary 304 stainless steel construction, hose-down/wash-down (IP-65) rating

HANDLING 350 lb [159 kg] Stacks of Plastic Totes

DETAILS The manufacture of insulin for a pharmaceutical company involves transporting bags of product inside plastic totes. This counterbalance lift allows for a stack of totes to be handled off of a floor bound pallet. The handling of a full stack of totes instead of a single tote eliminates double handling and saves time in the manufacturing process. The lift is constructed entirely of stainless steel and carriage an IP-65 rating for a daily sanitizing process which involves spraying the lift with highly caustic sporicides.



STAINLESS STEEL CONSTRUCTION
 HOSE-DOWN / WASH-DOWN (IP-65)

